

APPLICATION OVERVIEW:

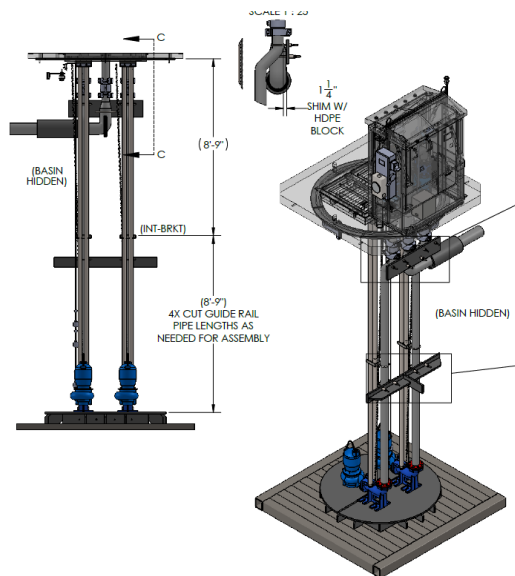
We worked with Burgess & Niple and the City of Delaware, Ohio, to design and build a pump station for the Georgetown Senior Apartments.

PUMP STATION DETAILS:

We prefabricated a 6 ft. diameter by 18 ft. deep HDPE wet well. A NoVault NV2 pump station was included in the package and it arrived to site prefabricated with the piping, valves, and control panel all enclosed. The pumps selected were two 5 HP Barnes explosion-proof chopper pumps, rated for 150 GPM @ 32TDH. An emergency generator plug with a manual transfer switch was also included.

INSTALLATION:

The installation was completed by the City of Delaware with oversight from Excel Fluid Group as shown below.



Delaware, OH

Georgetown Senior Apartments Pump Station



PUMP SYSTEM

NoVault Pump Station™ with HDPE Wet Well & Sewer Chopper Pumps



INSTALL DATE

March 2025



OPERATIONAL IMPROVEMENT

Long Term Solution & Replacement of a 1960s Pump Station



SERVICE AREA

Georgetown Senior Apartments

