

APPLICATION OVERVIEW:

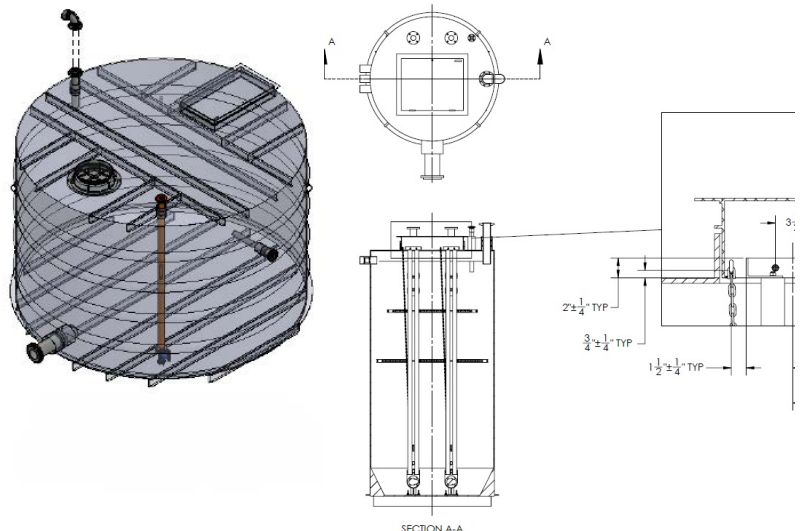
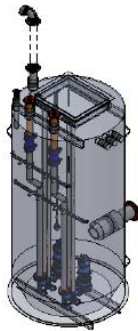
In collaboration with Bechtel, we designed an industrial wastewater pump station for Cheniere Energy Corpus Christi Liquefaction Facility in Gregory Texas. This pump station is designed to collect all sanitary wastewater and pump it off-site to the local sewer system.

PUMP STATION DETAILS:

Our team engineered and constructed this prefabricated fiberglass pump station, measuring 6 ft. in diameter and 12 ft. in depth along with a 15.6 ft. in diameter and 10 ft. in depth fiberglass storage tank. Excel Fluid Group factory-installed all components within the wet well, including the piping and valves. This setup features two Barnes submersible explosion proof Grinder pumps, delivering the necessary 45 GPM at 130 TDH, all controlled by an Excel NEMA 4X duplex control panel.

INSTALLATION:

The installation was completed by the Bechtel team with the oversight of Excel Fluid Group.



Gregory, TX
Bechtel Lift Station



PUMP SYSTEM

1) EXCEL Fiberglass Lift Station



INSTALL DATE

April 2023



OPERATIONAL IMPROVEMENT

Sanitary Wastewater for Cheniere Plant



SERVICE AREA

0 h



August 2023

Design-Build Pump Stations