

# EXCEL

EXCEL FLUID GROUP, LLC

## APPLICATION OVERVIEW:

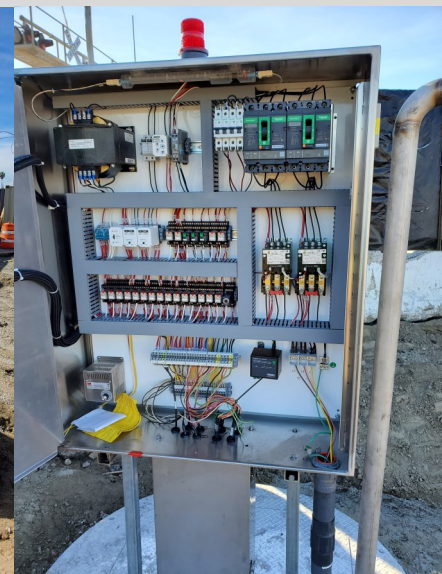
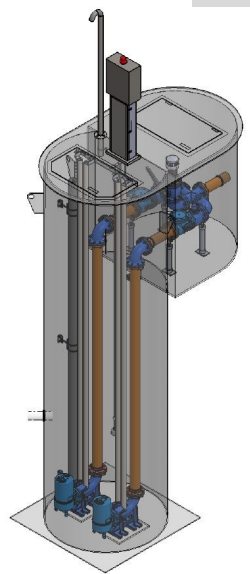
We worked with Stacy Witbeck and Herzog Contracting to build a fiberglass sanitary pump station needed for the Port of LA Pier 400 expansion. The project included 11 additional rail lines and building infrastructure that required an extension of the sewer network plus this pump station.

## PUMP STATION DETAILS:

Our team prefabricated this 5 ft. diameter by 17.5 ft. deep integrated fiberglass pump station in our Cleveland facility. The wet well structure has monolithically integrated 5 ft. diameter by 6 ft. deep valve vault with the 4 in. ductile iron piping preinstalled throughout. Barnes submersible non-clog pumps were used as they deliver the designed 25 GPM @ 25 TDH. It's all controlled by a Primex NEMA 4X stainless steel duplex control panel.

## INSTALLATION:

The installation was completed by Herzog with oversight from Excel Fluid Group as shown below.



Los Angeles, CA

Port of LA—Pier 400

Corridor Tracks Expansion Pump Station



**PUMP SYSTEM**

*Integrated Fiberglass Pump Station*



**INSTALL DATE**

*March 2023*



**OPERATIONAL IMPROVEMENT**

*Prefabricated Solution for Quick Installation*



**SERVICE AREA**

*Port of LA - Pier 400*

**THE PORT OF LOS ANGELES**

**STACYWITBECK**

**HERZOG**

June 2023

**Design-Build Pump Stations**